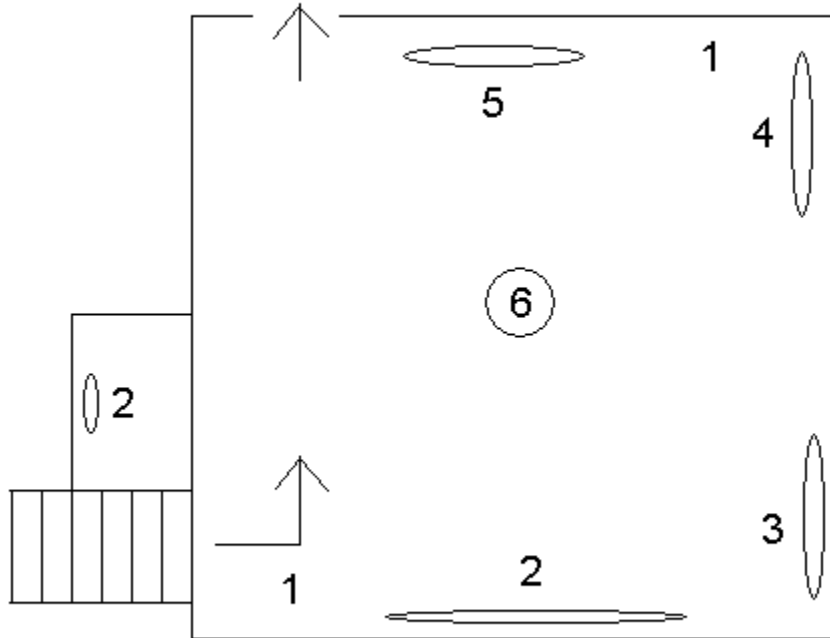


MAIN HALL : Ground Floor (01 E)



- (1) The ceiling has been restored twice in two hundred years. In 1794 the Italian frescoes were whitewashed to calm the minds warmed by the Sans Culottes. The monks of the Beuron Monastery (Bavaria) restored it in the 19<sup>th</sup> century and two Polish artists were called in to clean it after a fire in 1995, which fortunately did not spread far. So the angels were of Italian origin, then received a Bavarian touch and finally a Polish varnish. So they have become real Europeans over the centuries !
- (2) The coats of arms depict those of the seven generations who lived here between 1505 and 1755. Initially the coat of arms of the Beauforts had 3 red diagonal lines. The shells were added at the end of 13<sup>th</sup> century, after they had participated in crusades and pilgrimages to Saint James of Compostela, to be forgiven for their many misdeeds (among others during the Cow War), at least according to the scandal-mongers.  
The coats of arms with three blazons show a tearful widower, who was quickly consoled by a second marriage.
- (3) The edges of the wild boar hunting murals are curious: the dogs were decapitated, probably because the first room to house the paintings in the 17<sup>th</sup> century was too small to accommodate the canvas. But when it was moved to the Hall in the 18<sup>th</sup> century the new wall was too large to accommodate it. The local craftsmen had little talent, as you saw in the *Lion Hunting near Spontin*. They didn't dare redrawing the bodies of the dogs, but rather were satisfied with filling in the edges with tree trunks and leaves.

- (4) Wolf hunting.
- (5) Roebuck hunting.
- (6) Hare hunting. Daubing painters added in the 18<sup>th</sup> century the upper stripes 50 cm high to avoid an empty space between the canvas and the gallery. Their lack of talent is visible when you compare their leafs, which look like bananas, with those painted underneath by Snyders. These painters had daubed the sides depicting various views of villages and towns with the same kind of foliage. These additions were removed during the restoration of the paintings.
- (7) Notice the Louis XVI lantern with its smoke-consuming hat in the middle of the hall and the wrought iron Louis XV gallery. Below this gallery you discover the 64 quarters of Humbert of Beaufort-Spontin (-1651) and his wife Margaret of Berlaymont (-1633), but with a touch of snobbery: the family tree is not well balanced, the best alliances have been favoured.